

# Concept mapping second screens to augment understanding of science on television

John Dowell & Sylvain Malacria  
Computer Science, UCL

Sean O'Halpin  
BBC R&D





The Hillis Plot  
*Science*, 2003

companion second screens

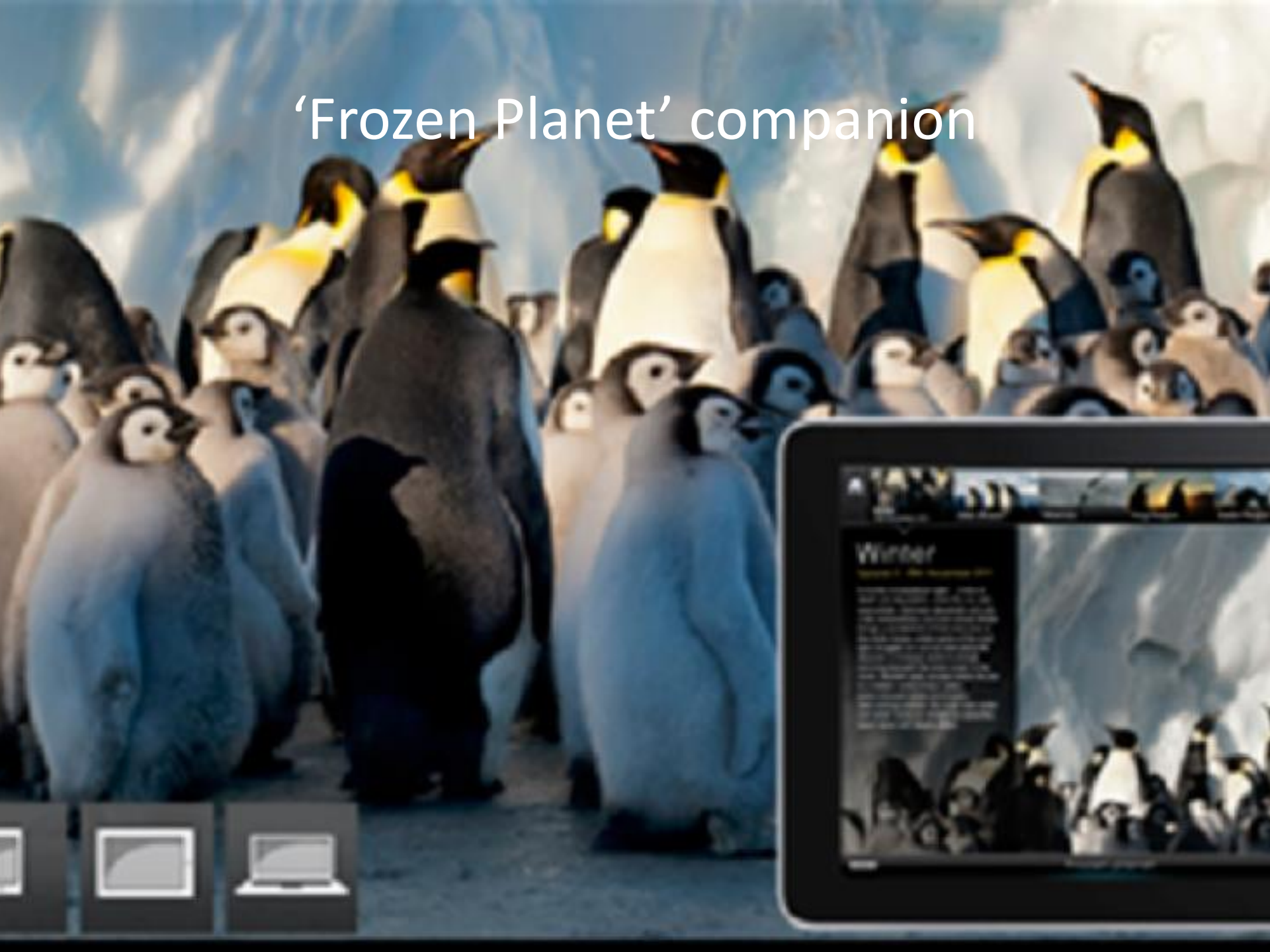


LEADERS BOARD

### LEADERS

PL	PLAYER	SCORE	PAR	DIFF	F	T	R	B	PTS	STROKE	GRIP	WIND
T1	SCOTT	-5	17	-12	72	70	67		209	--	--	
T1	SCHWARTZEL	-4	16	-12	69	71	68		208	--	--	
3	DAY	-3	17	-11	72	64	72		208	--	--	
T4	DONALD	-3	18	-10	72	68	69	69	278	--	--	
T4	WOODS	-5	18	-10	71	66	74	67	278	--	--	
T4	DEWY	-5	18	-10	69	69	73	67	278	--	--	
T4	CHOI	-2	16	-10	67	70	71		208	--	--	
8	GARRERA	-1	16	-9	71	70	67		208	--	--	
9	VAN PELT	-2	18	-8	73	69	66	70	290	--	--	
10	FALMUS	-2	17	-8	71	72	69	70	292	--	--	

# 'Frozen Planet' companion



## Winter

During the winter months, King penguins are seen in large colonies on the ice. The birds are seen in large colonies on the ice. The birds are seen in large colonies on the ice.



# BBC's evaluation

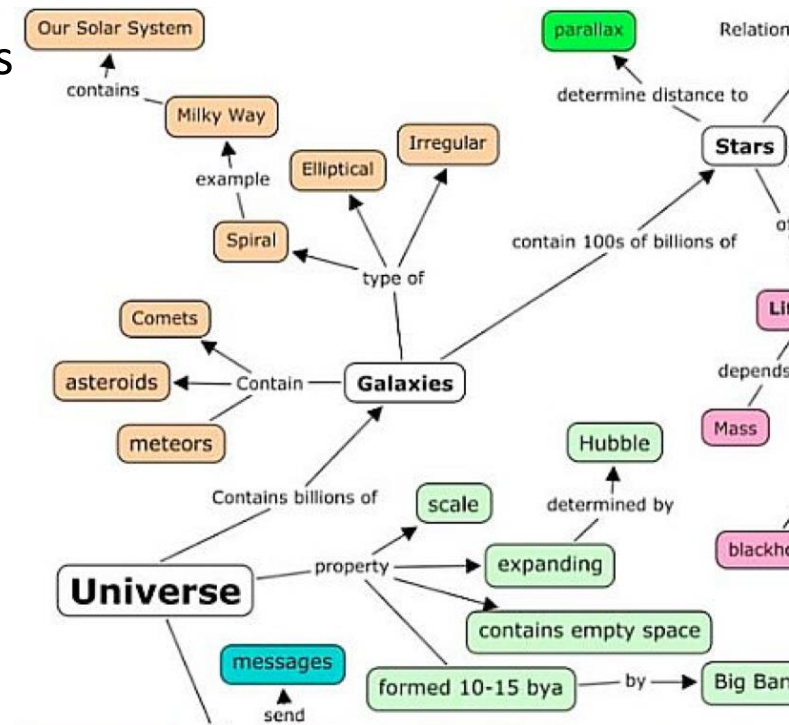
1. it broadened and deepened viewers' engagement with the programme content;
2. it allowed users a personalised viewing according to their interests;
3. it encouraged curiosity and shared discovery;
4. it provided additional but not excessive authoritative information;
5. it worked as a log of items of interest to a particular viewer and marked things to access later;
6. it particularly engaged 'pre-family' viewers (who sought more information) and children (who used it to continue learning journeys);
7. it could compete negatively for the viewer's attention and was ignored during highly visual parts of the programme;
8. smartphones rather than tablets were used to view the second screen during the programme, the converse for viewing the second screen later;
9. simply repeating the broadcast content was not valued and additional content was expected;
10. the second screen interaction should be user paced, not system paced.

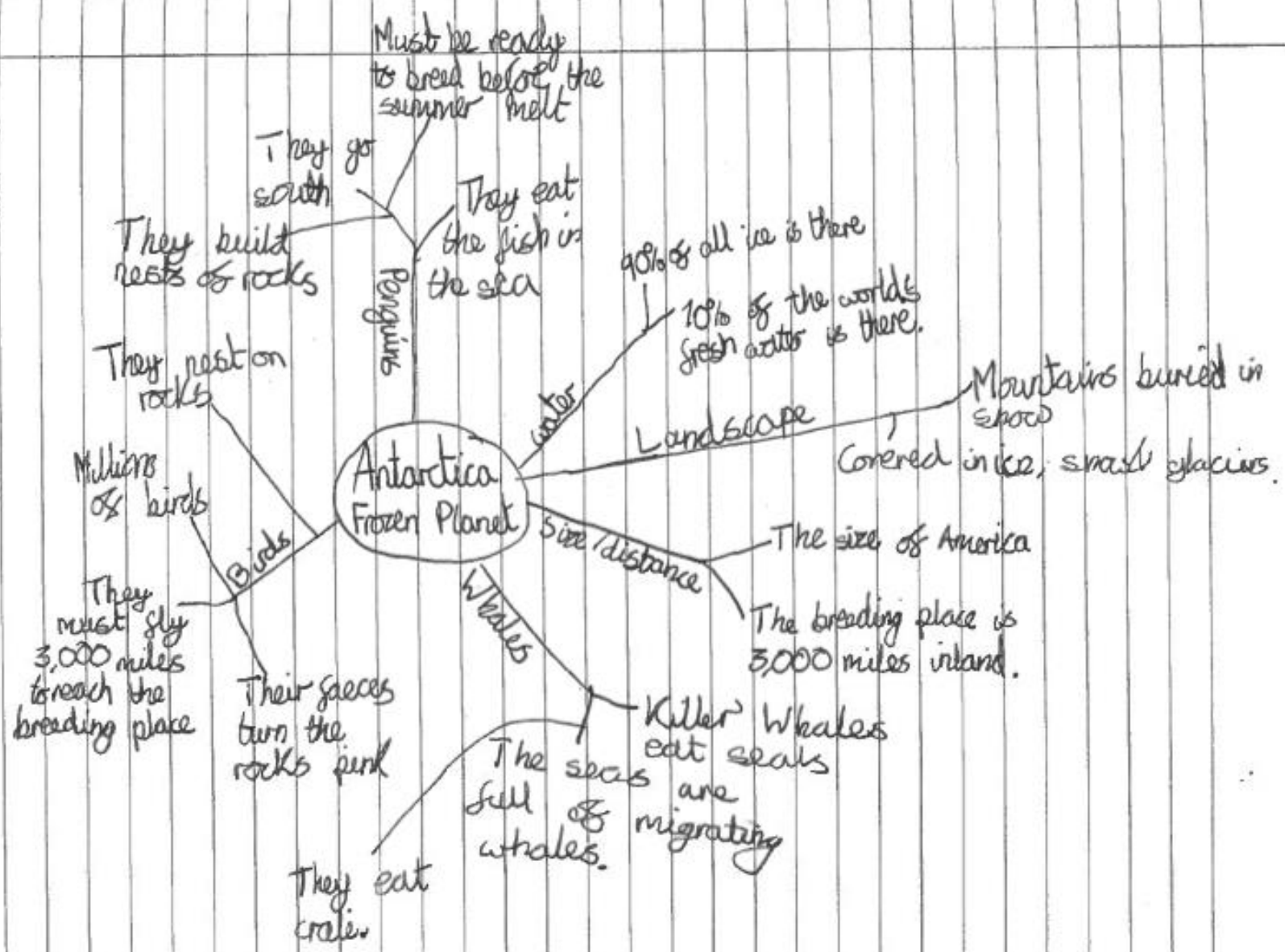
# Concept mapping second screens

## concept maps

- directed graphs, a form of semantic network
- used to capture and present knowledge
- used as a tool in science classes
- construct your own, read someone else's
- proven learning value (Nesbit & Adesope, 2006)

concept map a TV science programme?





Antarctica  
Frozen Planet

Must be ready to breed before the summer melt

They get south

They eat the fish in the sea

They build nests of rocks

90% of all ice is there

10% of the world's fresh water is there.

Mountains buried in snow

Covered in ice, small glaciers.

The size of America

The breeding place is 3,000 miles inland.

Killer Whales eat seals

The seas are full of migrating whales.

They eat crabs

Their faeces turn the rocks pink

They must fly 3,000 miles to reach the breeding place

Millions of birds

They nest on rocks



SEVEN AGES OF  
**STARLIGHT**



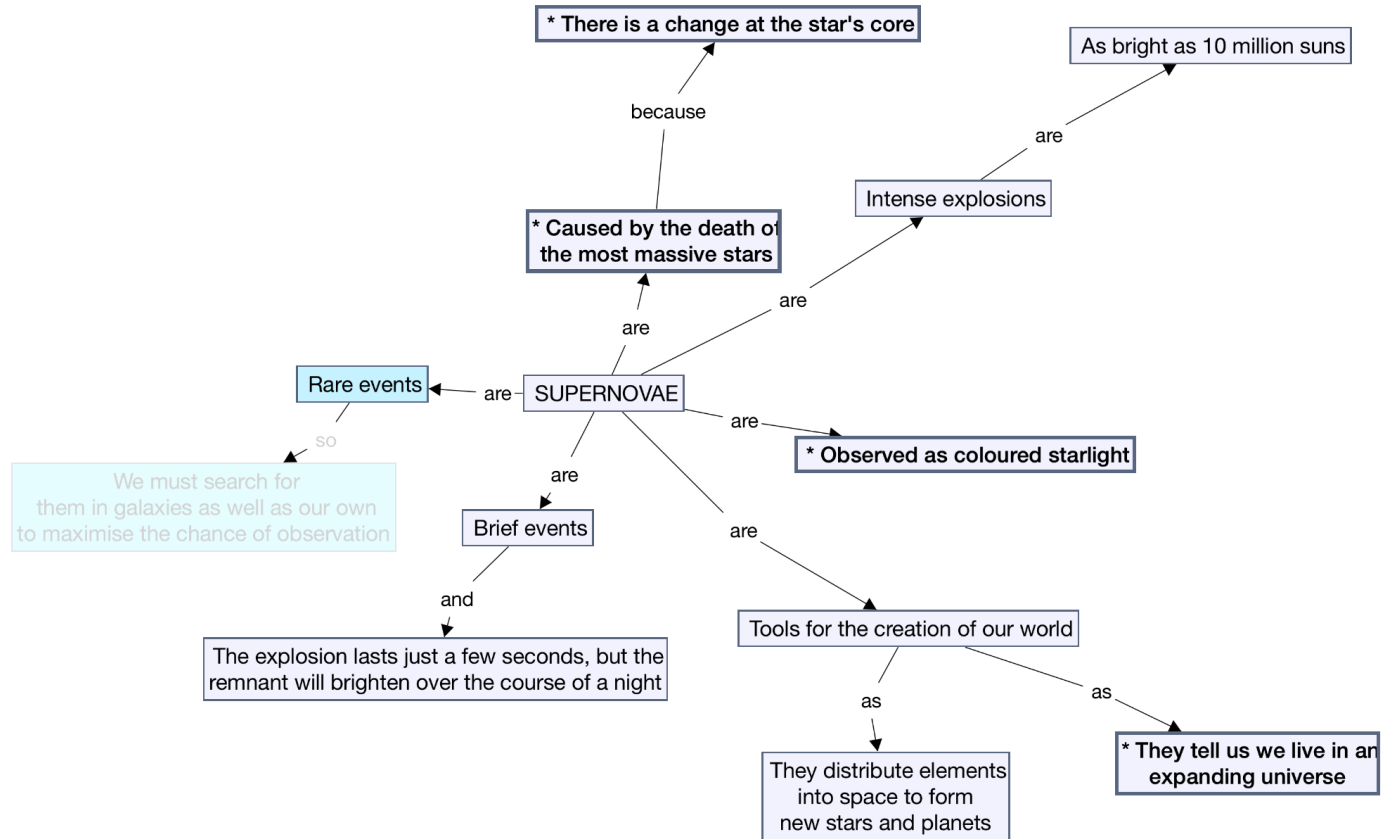
BBC  
FOUR

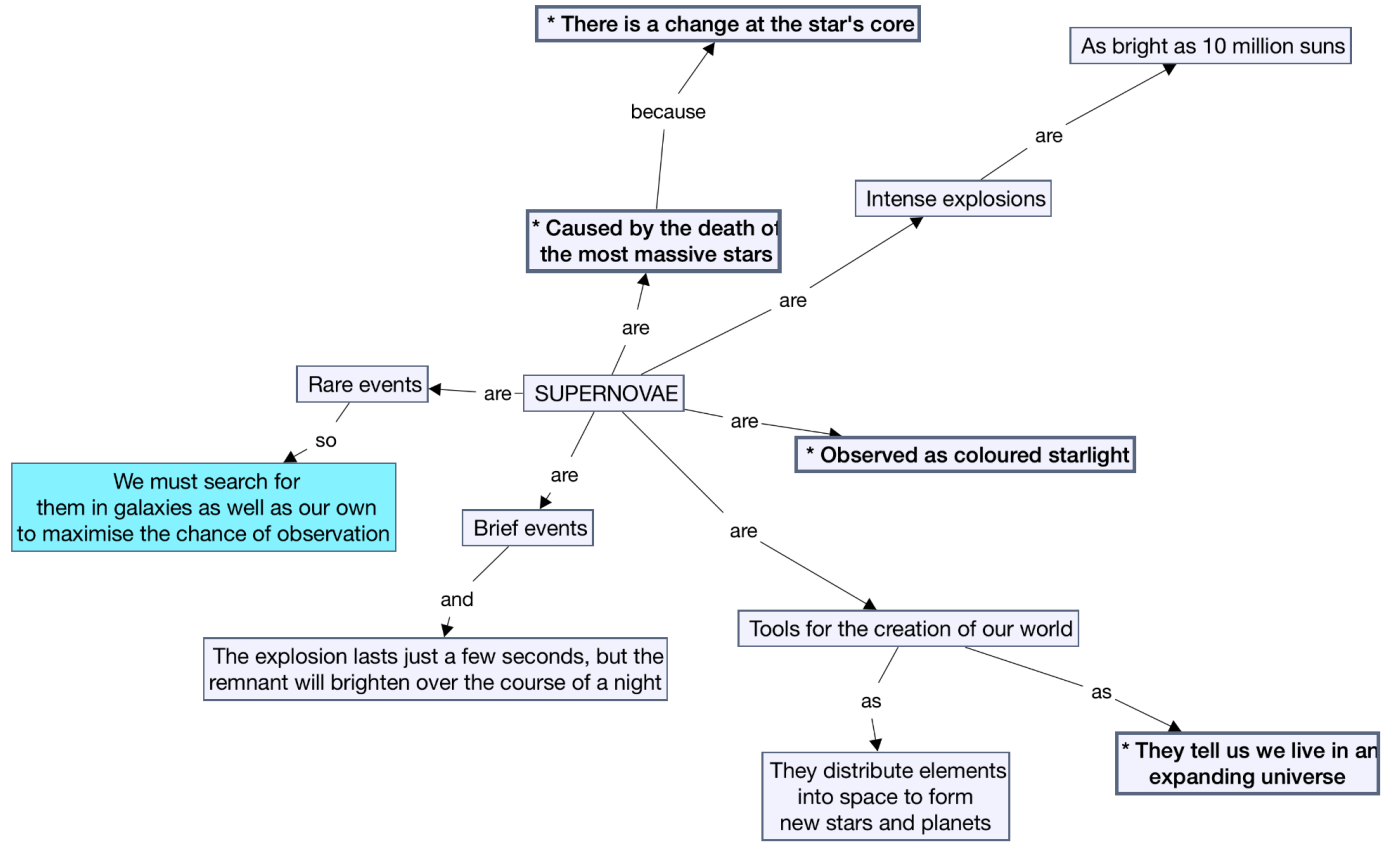
# Concept map of the first 4 minutes of *Supernovae*, Episode 5 of *The Seven Ages of Starlight*

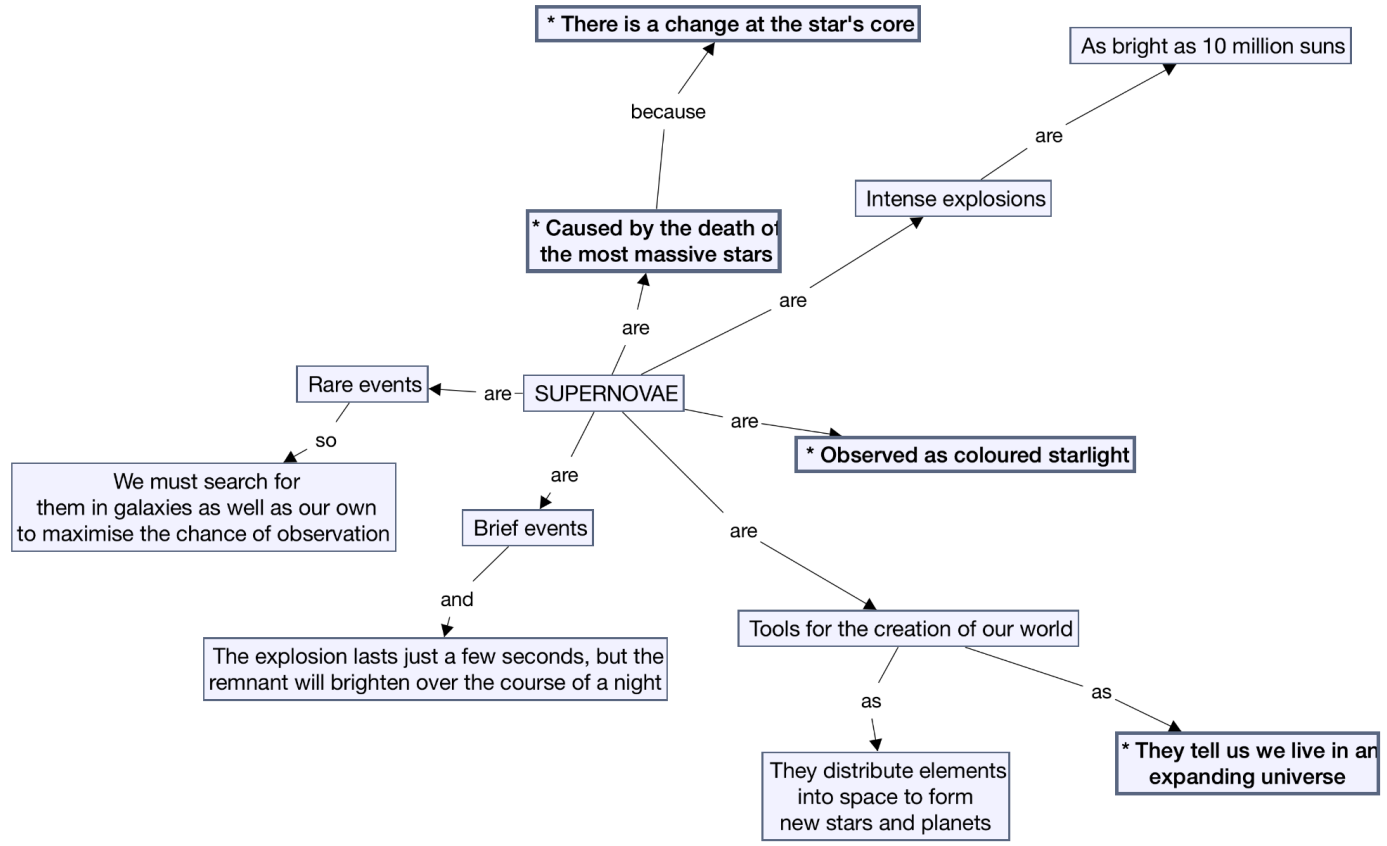
iPad

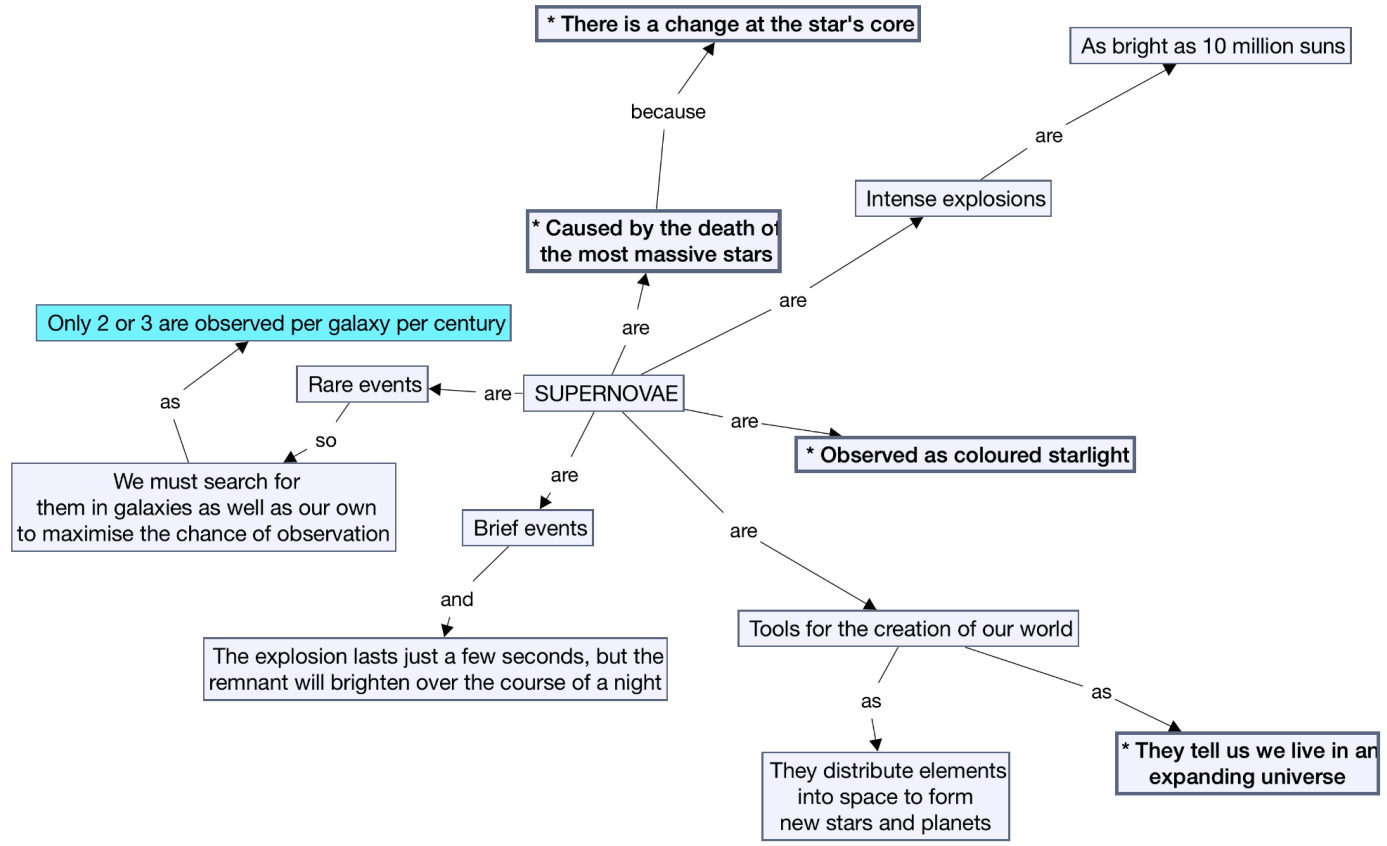
17:31

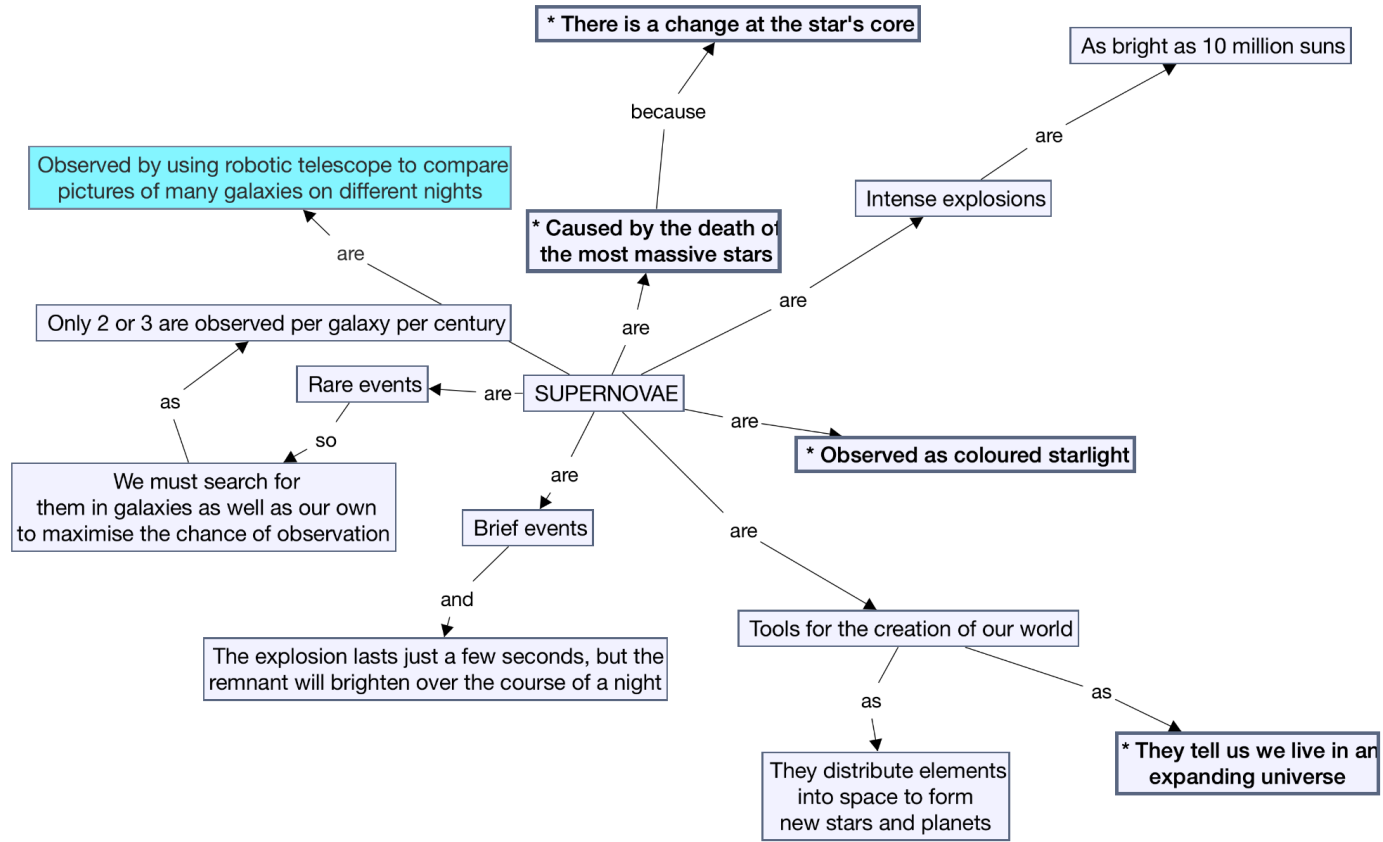
88 %

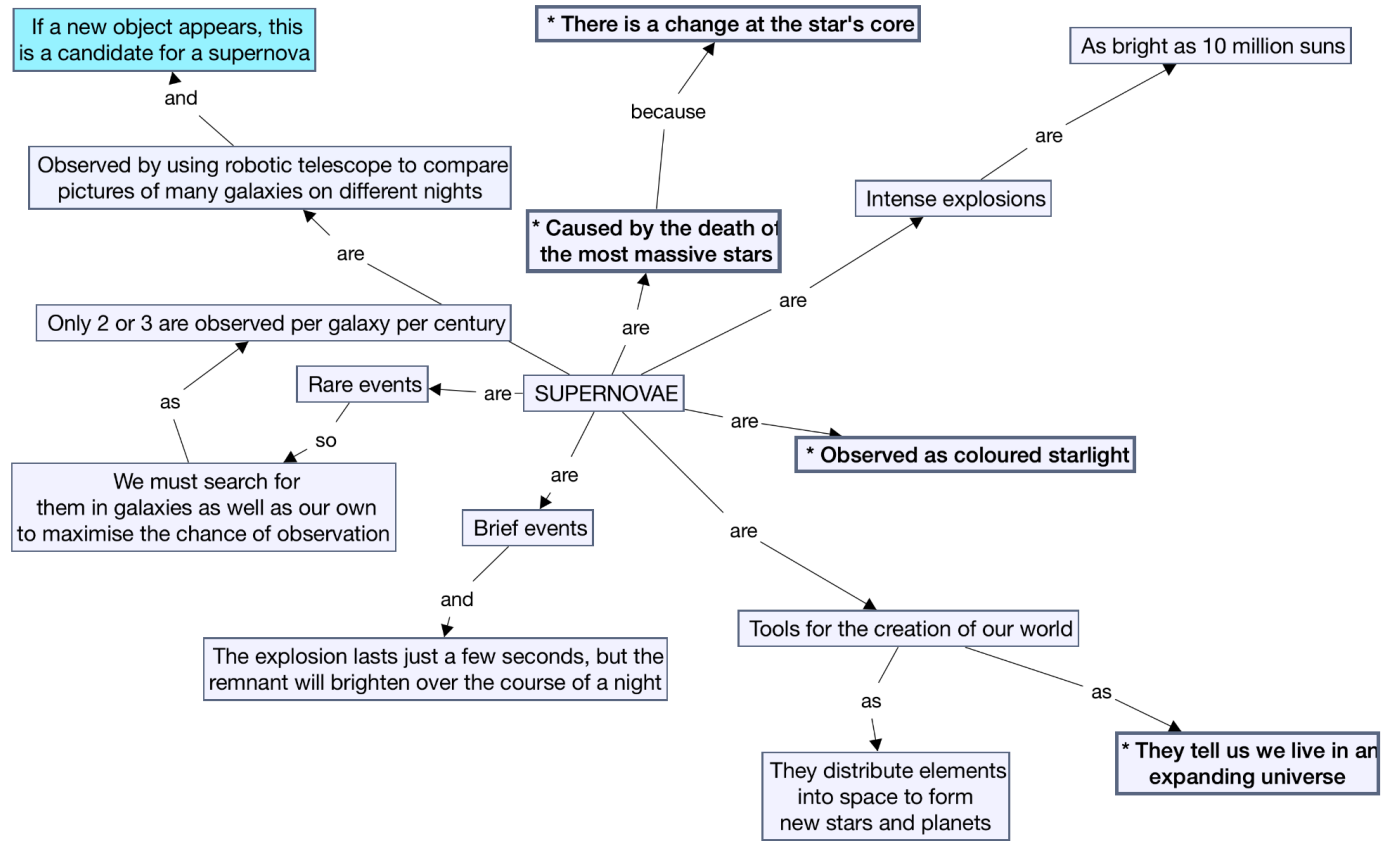


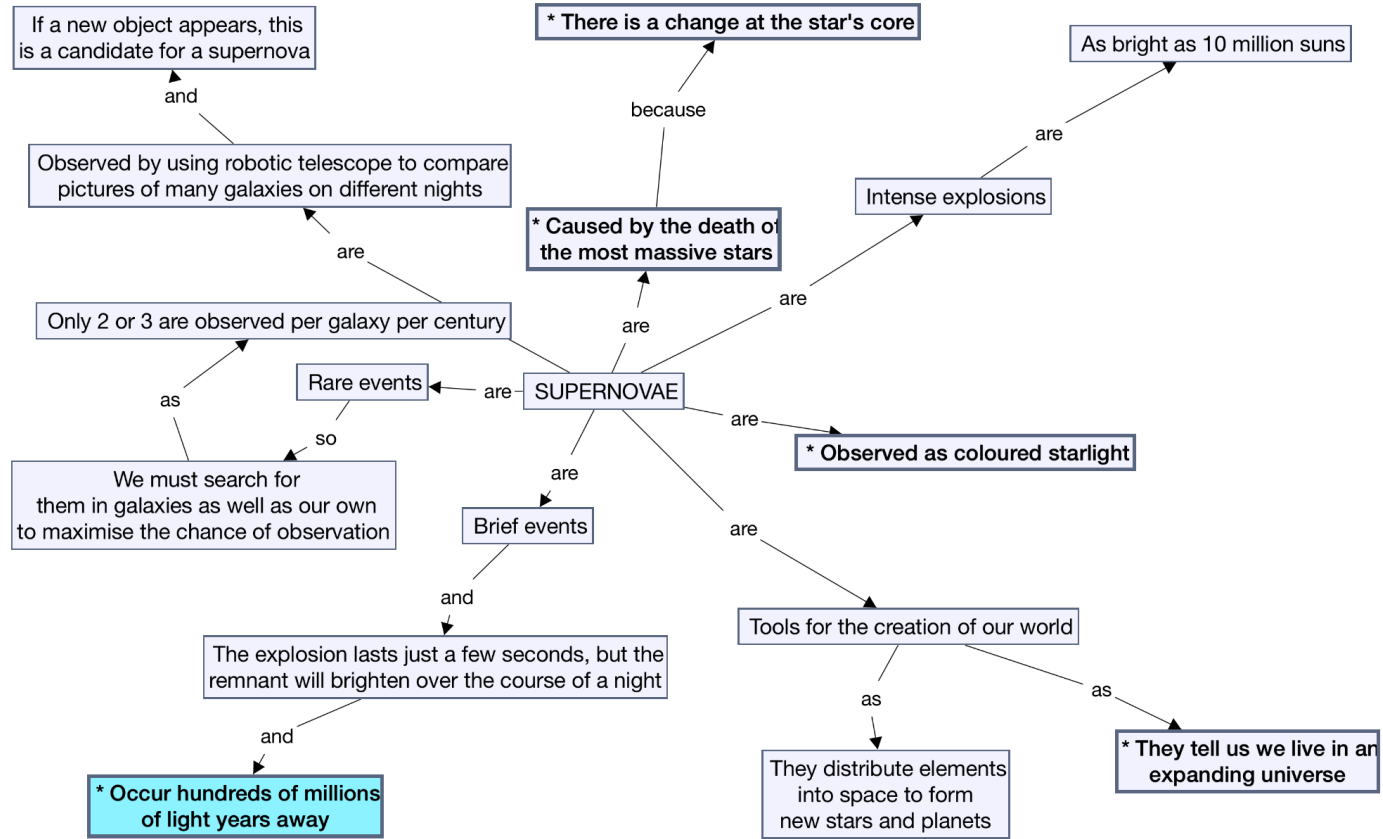




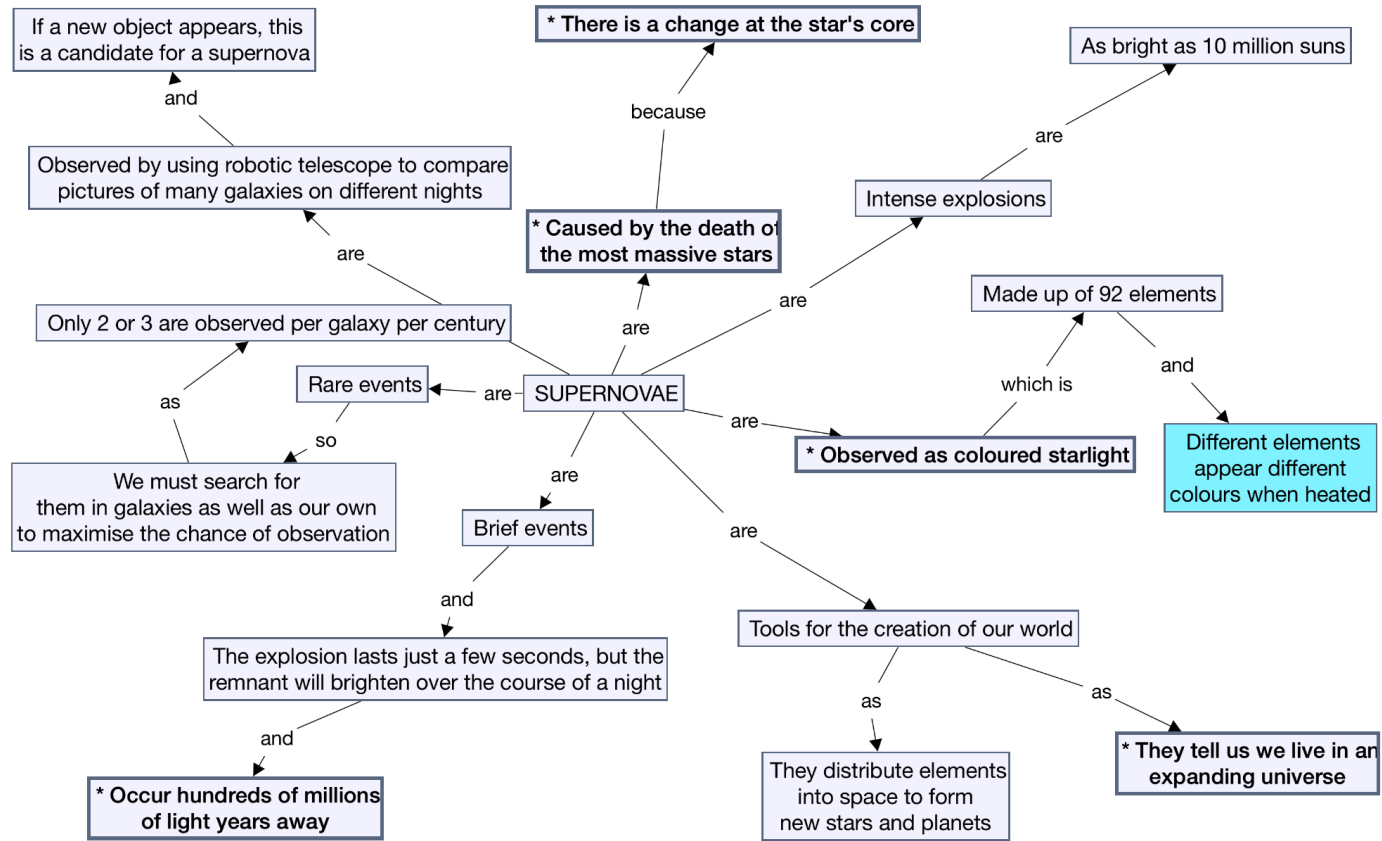


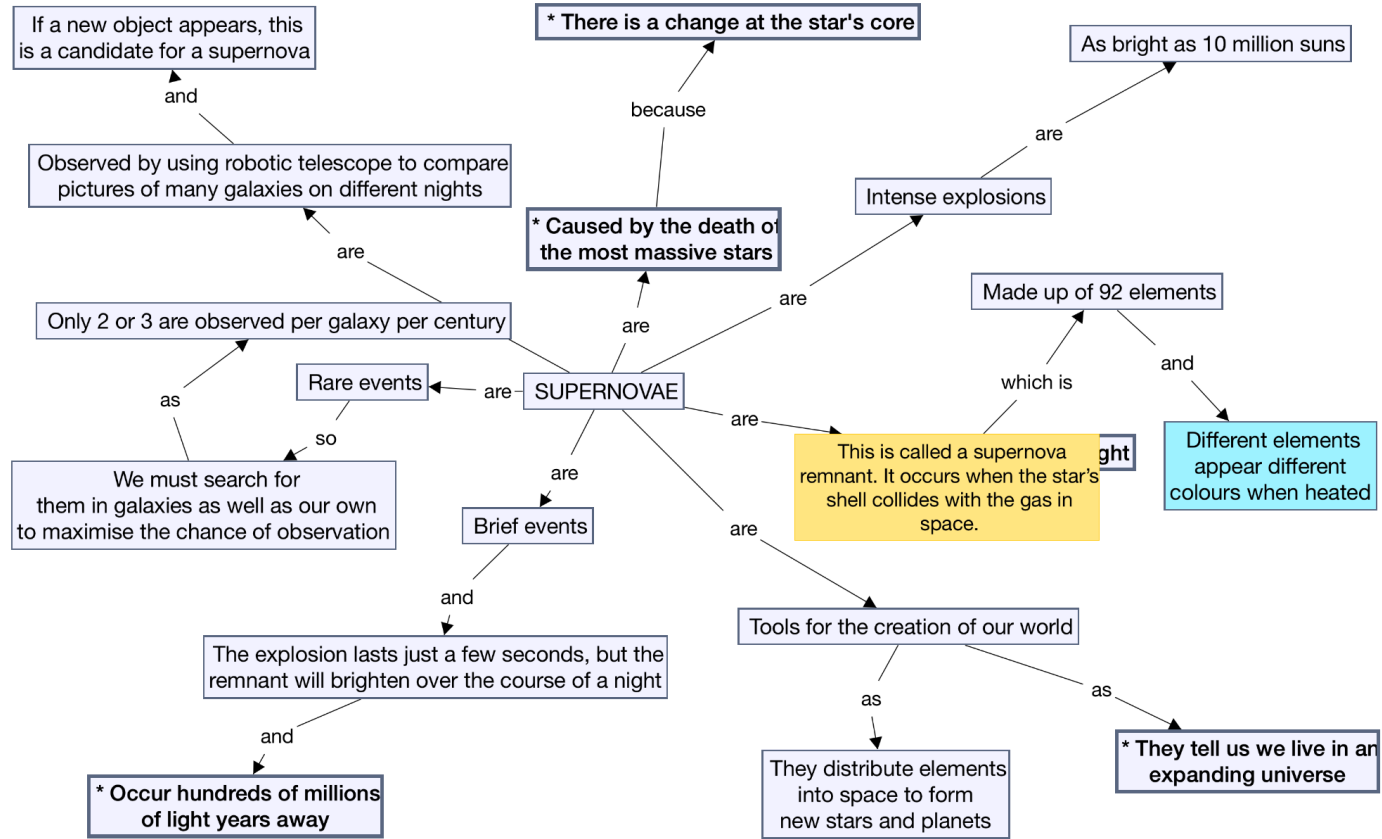


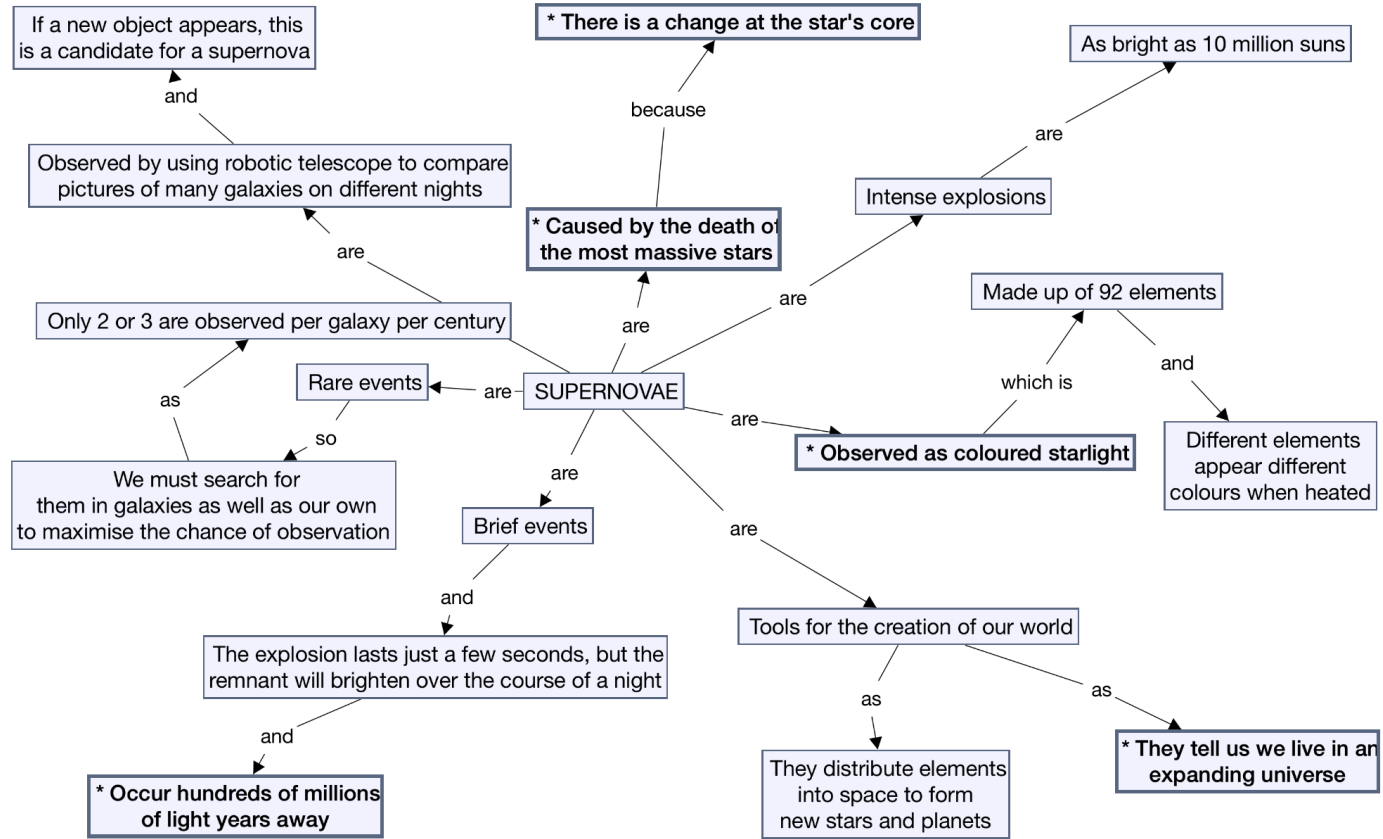












# representational functions

the primary functions of second screens as representations in augmenting TV programme understanding and engagement:

- **Synchronized & coordinated**
  - ... time-based pairing of content
    - content that is designed for a managed focus of attention
- **Persistent & accumulating**
  - ... a persisting view of the programme content, extending with the broadcast
    - augmenting recall of seen content, helping form connections
- **Synoptic**
  - ... an abstraction of the ideas, facts and connections in the programme
    - paralleling the process of understanding
    - a means of categorizing, indexing and re-finding content viewed
- **Interactive (navigable, interrogable, indexable)**
  - ... navigating and interrogating the seen programme content
    - for active learning and engaging the user
- **Adaptable and adaptive**
  - ... personalised interaction responding to knowledge and interests
    - modifying automatically or just alternative pathways